

HEATING
SOLUTION

Heating Aluminum
Sheet for
Photovoltaic
Panels

HEATING ALUMINUM SHEET FOR PHOTOVOLTAIC PANNELS



CHARACTERISTICS

After snowfall, a layer of snow is deposited on photovoltaic panels, decreasing their performance until total shutdown. Once installed, heating sheet from Thermal Technology does not permit snow accumulations, preventing the panel opturation. Also, when photovoltaic panels are installed on the roof, a risk could emerge for the roof's structural resistance when intense snowfall happens. The snowmelting system for photovoltaic panels eliminates the possible overloading of the roof weight.



NO HARMFUL ELECTROMAGNETIC EMISSIONS

FUNCTIONAL CHARACTERISTICS

Heating sheets can be easily installed. They are composed of double layer of adhesive aluminum and are bonded on the panel's rear side. It is possible to connect from 7(500W) to 14(250W) heating sheets, using tripolar connectors of 16A. During snowfalls the heating is turned on, in order to prevent snow accumulation and is turned off only after entire roof is free of snow. If outside temperature is higher than 10°C the device should not be turned on.

CARBON FIBER

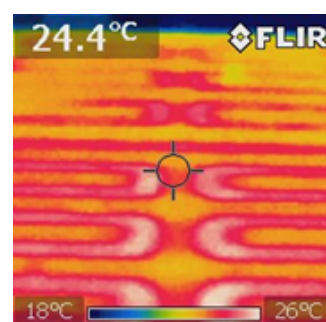
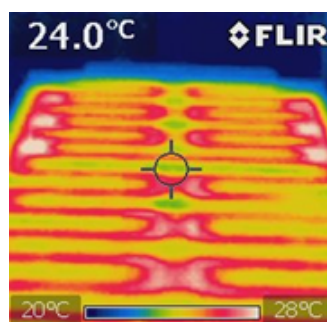
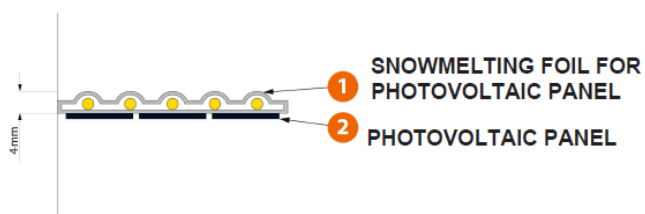
Carbon fiber is flexible, does not oxidize, does not produce harmful electromagnetic fields during electricity flow, has no dimensional variations, as the temperature changes, or deterioration of ohmic values. No wearing and no maintenance necessary. Its high resistivity permits significant energy savings, maintaining the thermal performance..

MATERIAL STRATIFICATION

Stratification from outside:

- External side is made of 0.5 mm adhesive aluminum sheet
- Carbon fiber resistors
- Inner side made of 0.5 mm adhesive aluminum sheet

HEATING FOIL - INSTALLATION METHOD



MODEL	POWER SUPPLY	POWER	PROTECTION DEGREE	TEMPERATURE CONTROL	CABLE AND CONNECTORS	DIMENSIONS
FT1E-ALU	230 Vac 50/60 Hz max 16A	about 180W/m ² with earthing	IP67	Through electronic control on demand	Power cable H07RNF, 4,00 m length, IP68 female connector and shinking tube for the last free connector	customized

CONFORMITY



This product is manufactured in conformity with the electrical safety standards set by Low Voltage Directive 2014/35/EU. This product is in conformity with Electromagnetic Compatibility Directive 2014/30/EU, concerning the standards for electromagnetic emissions.

Thermal Technology powered by Carbon Fiber Heating SRL - 417075, Borş, Parc Industrial Borş, Nr. 1C, jud. Bihor, Romania
Phone: + 39 0423 858589 - www.thermaltt.com - info@thermaltt.com